



US Army Corps of Engineers



American River Common Features Project

October 28, 2009

Dan Tibbitts, P.E.
USACE Project Manager, Common Features Project

BUILDING STRONG™



US Army Corps of Engineers



BUILDING STRONG™



US Army Corps of Engineers



The flood of 1986
nearly caused the
inundation of the City
of Sacramento



BUILDING STRONG™



US Army Corps of Engineers



BUILDING STRONG™



Reasons that led to near inundation of Sacramento include:

- Insufficient storage issues
- Levee seepage issues
- Levee stability issues
- Levee erosion issues
- Levee height deficiencies

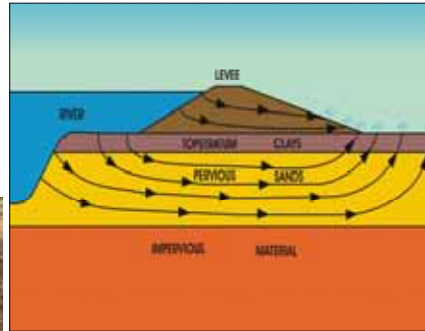


- Insufficient storage issues





- Levee seepage issues



BUILDING STRONG™



- Levee stability issues



BUILDING STRONG™



- Levee erosion issues



BUILDING STRONG™



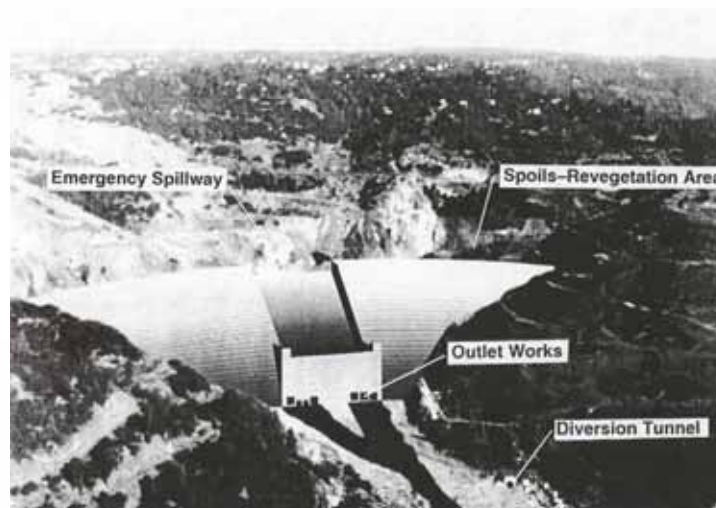
- Levee height deficiencies



BUILDING STRONG™



Congress authorized the Corps to investigate improvements to flood control for the City of Sacramento. Two studies, completed in 1991 and 1996 recommended a flood control dam at Auburn Canyon and levee improvements throughout the City.





- Auburn Dam was not authorized.
- Instead, Congress authorized features that were “Common” to all candidate plans.
- Common Features authorized in WRDA 1996.



- Features authorized by WRDA 1996 include:
- 24 miles of slurry wall in the American River levees
 - 12 miles of levee improvements in the east bank of the Sacramento River downstream from the Natomas Cross Canal
 - 3 telemeter streamflow gages
 - Modify the existing flood warning system



Congress chose not to authorized Auburn Dam, and instead authorized Folsom Dam improvements in WRDA 1999.

Because of this, Common Features was modified to include additional improvements to safely convey a peak release of 160,000 cfs.



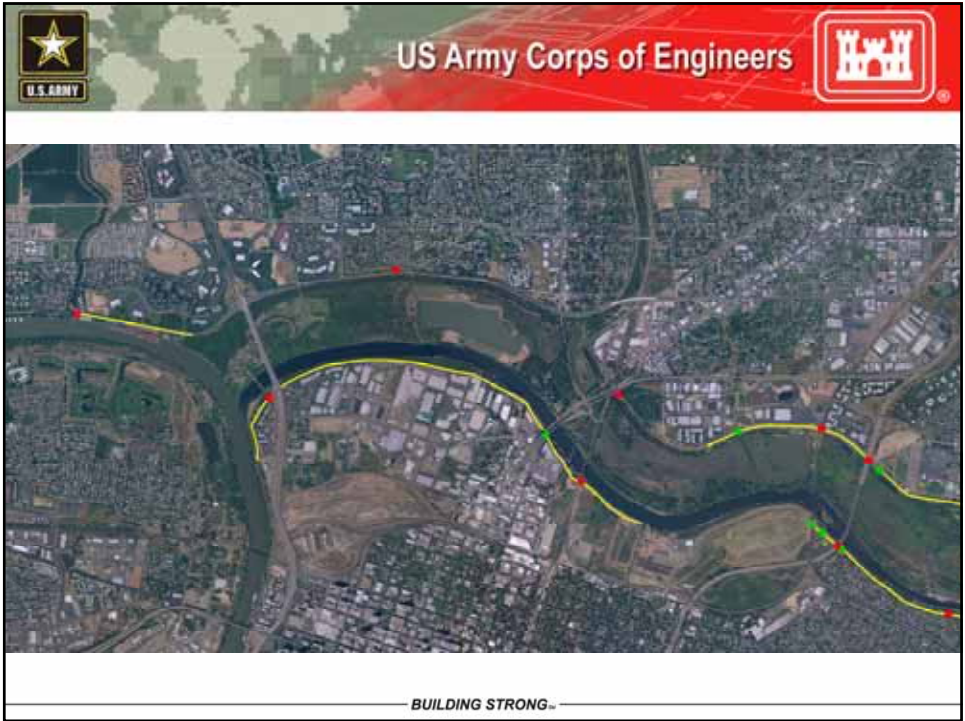


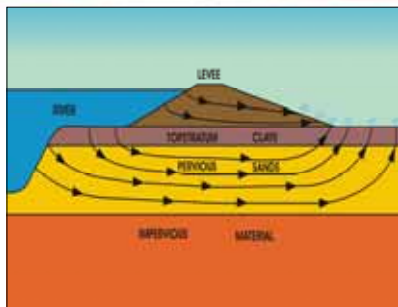
Features authorized by WRDA 1999 include:

- 4,500 feet of 2.5 foot levee raise on the left bank American River upstream of Mayhew Drain
- 1,500 feet of 1 foot levee raise on the right bank American River near Howe Avenue
- 5 miles of levee improvements in the south levee of the Natomas Cross Canal for consistency with Sacramento River improvements
- 5 miles of levee improvements in the north levee of the Natomas Cross Canal for consistency with the south levee improvements
- Mayhew Drain closure structure
- 1.2 miles of slurry wall in the north bank American River upstream of NEMDC
- 1 mile of slurry wall in the north bank American River near Jacob Lane



- Accomplishments (WRDA 96)
 - Completed approximately 20 miles of seepage cutoff wall on the American River
 - Completed 0.15 miles of jet grout construction on the American River at 5 locations of utility or road crossings
 - Completed 0.20 miles of alternative seepage remediation on the American River at 5 locations of utility or road crossings
 - Installed 3 streamflow gages upstream of Folsom Reservoir

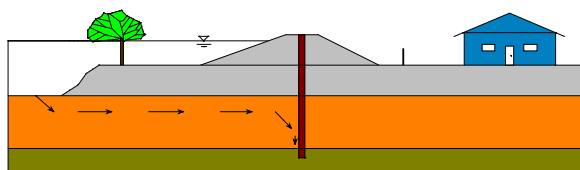




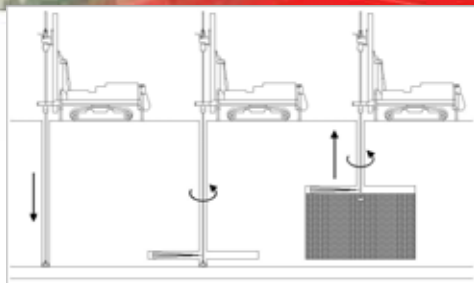
General seepage condition



Seepage remediation by cutoff wall



BUILDING STRONG™





BUILDING STRONG™



- Accomplishments (WRDA 99)
 - Completed Mayhew levee strengthening and raise, and closure structure in construction
 - Completed Jacob Lane Reach A levee strengthening





- Remaining work in design or construction
 - WRDA 96
 - 0.7 miles of seepage remediation at 22 sites along the American River
 - 2 sites to construction in FY 09
 - Balance of sites in FY 10
 - WRDA 99
 - 3.4 miles of levee raising and/or seepage remediation at three sites along the American River
 - 1 site to construction in FY 09
 - 2 sites to construction in FY 10

US Army Corps of Engineers

- Remaining work under evaluation
 - WRDA 96
 - 12 miles of levee raising and seepage remediation along the Sacramento River in Natomas; on hold pending completion of the PAC or GRR.
 - WRDA 99
 - 5 miles of levee raising and seepage remediation along the Natomas Cross Canal south levee and 5 miles of levee raising along the Natomas Cross Canal north levee; on hold pending completion of the PAC or GRR.

BUILDING STRONG™

US Army Corps of Engineers

- Common Features GRR/PAC
 - WRDA 96 and 99 addressed known levee deficiencies on the American and Sacramento Rivers.
 - Since that time, new deficiencies have been identified further affecting the greater Sacramento area.
 - Because the extent of these new deficiencies is unknown, a General Reevaluation Report (GRR) is required to identify the extent of the deficiencies, possible remedial actions, and a recommended action.
 - A PAC is being completed in order to accelerate Natomas features ahead of other GRR features, to help reduce the flood risk of the Natomas Basin.

Legend:

- Project Levee (Protecting the City of Sacramento)
- Other Project Levee
- Non-Project Levee

Scale: 1 inch = 1 mile

North Arrow

Project Levee in the Territory of the City of Sacramento

BUILDING STRONG™



- The Common Features project, when completed, will allow the American River and the rest of the Sacramento River system to be able to convey the Folsom Dam design release of 160,000 cfs.

Questions?