

## California's Levee Issues: People and Water Supplies at Risk

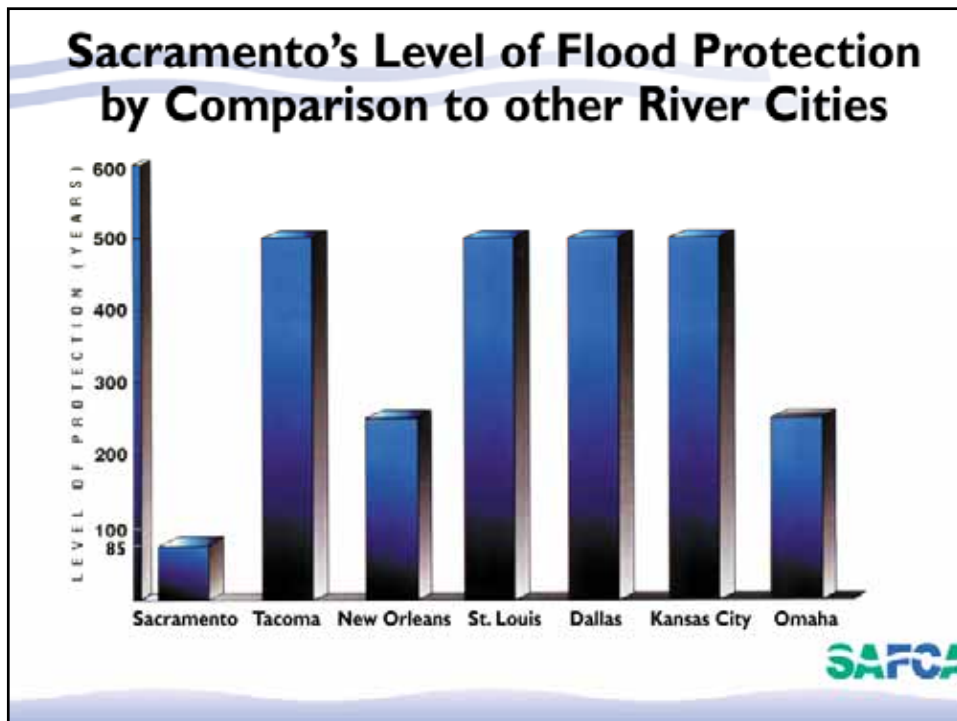
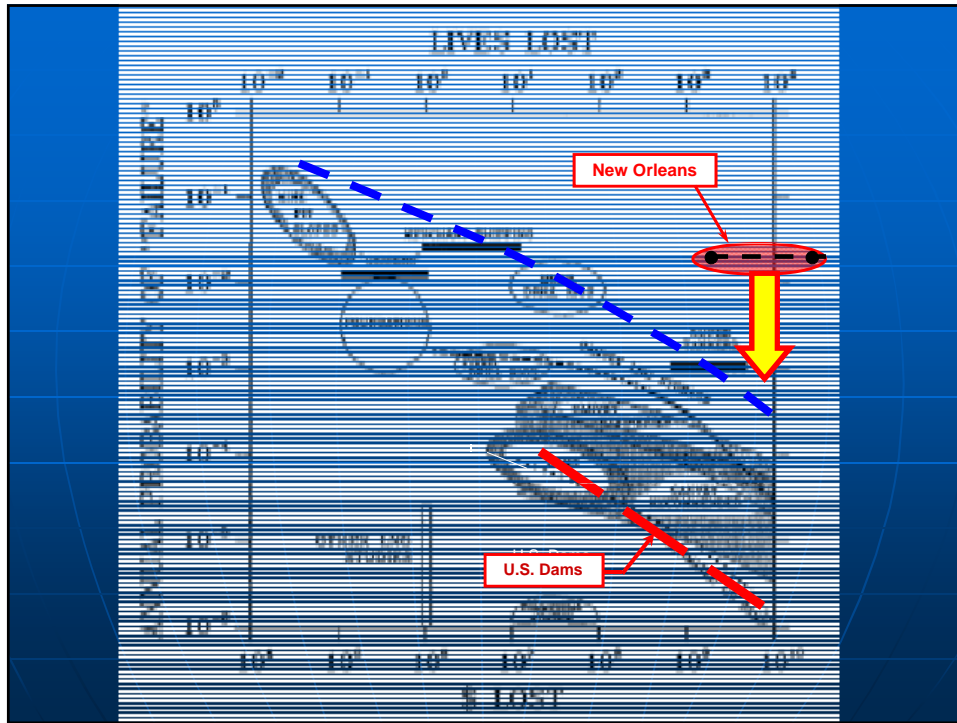


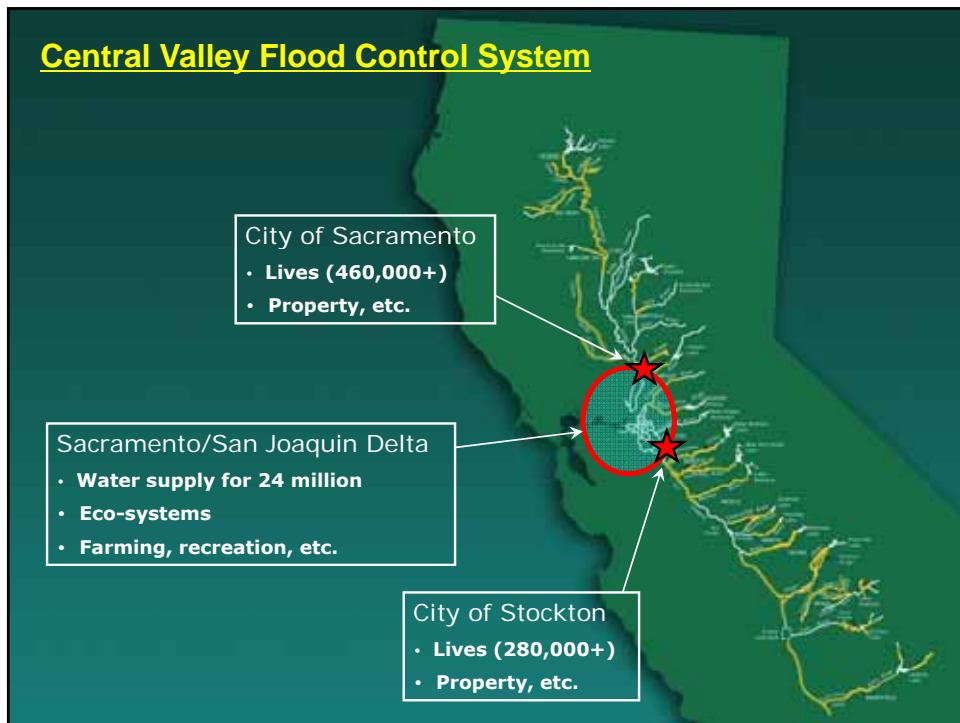
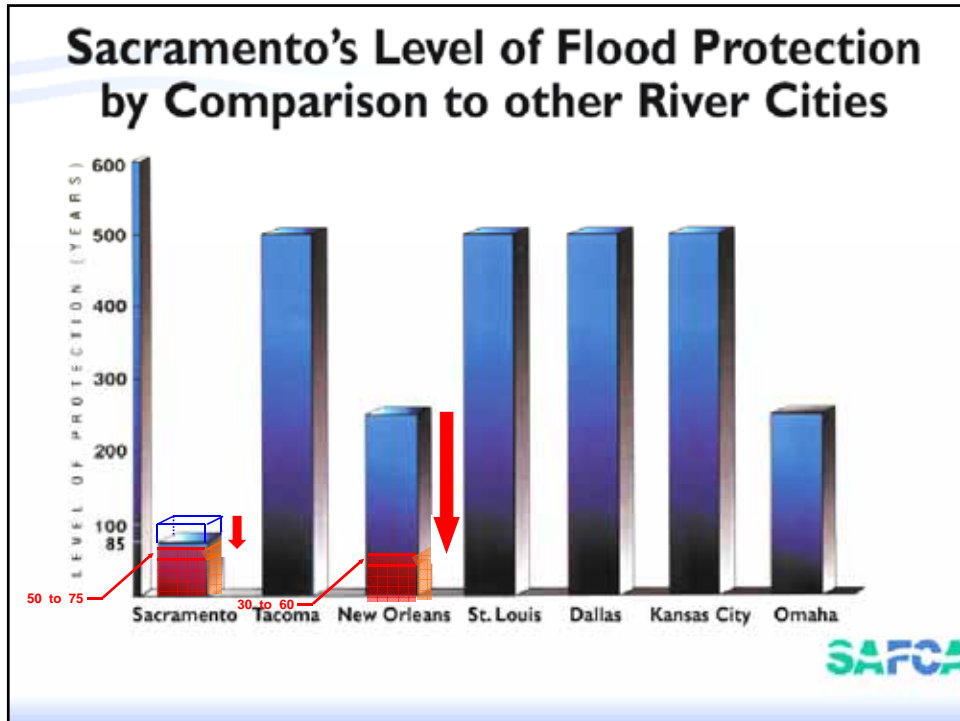
Dr. R. B. Seed

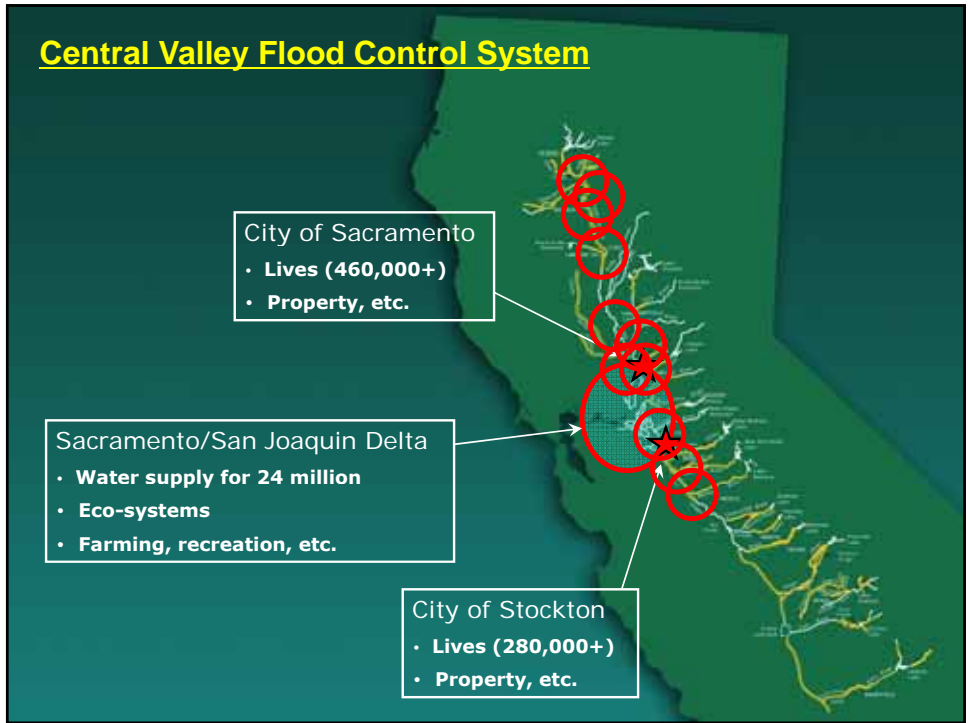




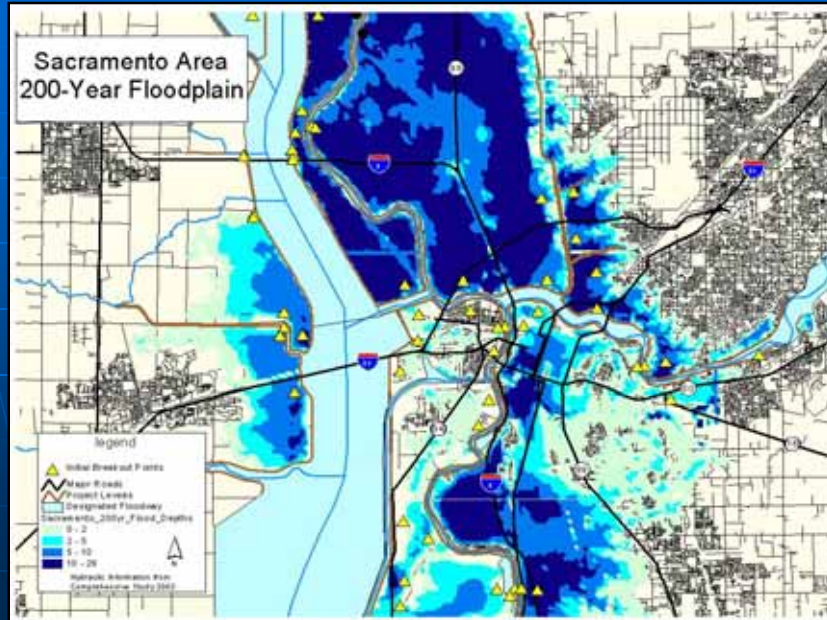








## Sacramento Urban Area – 200-year Flood Scenario



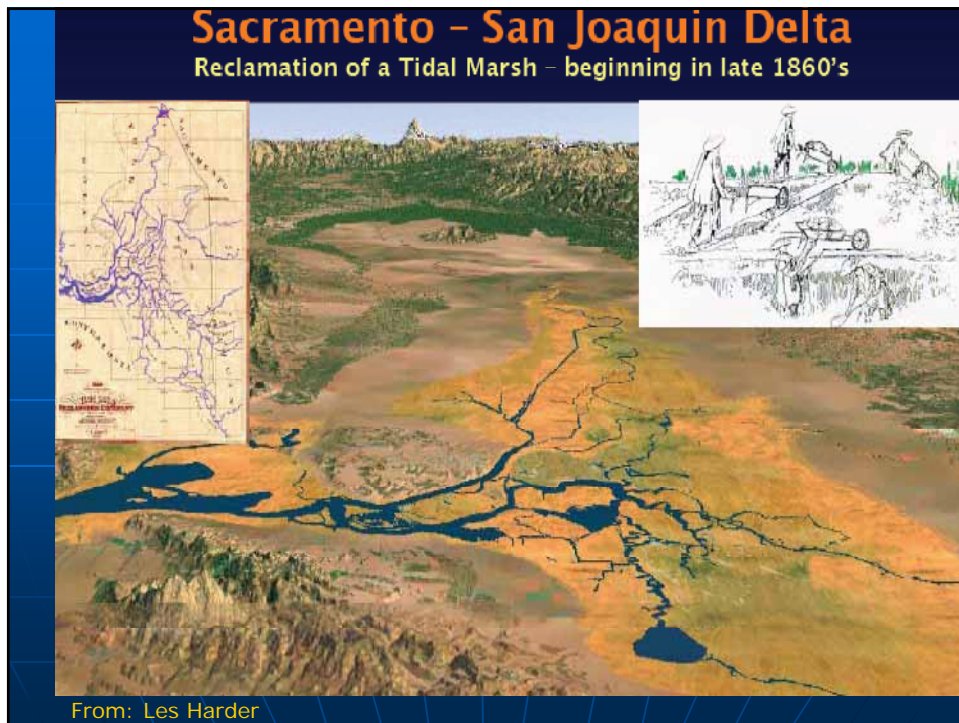
## Continuing Development in Deep Floodplains

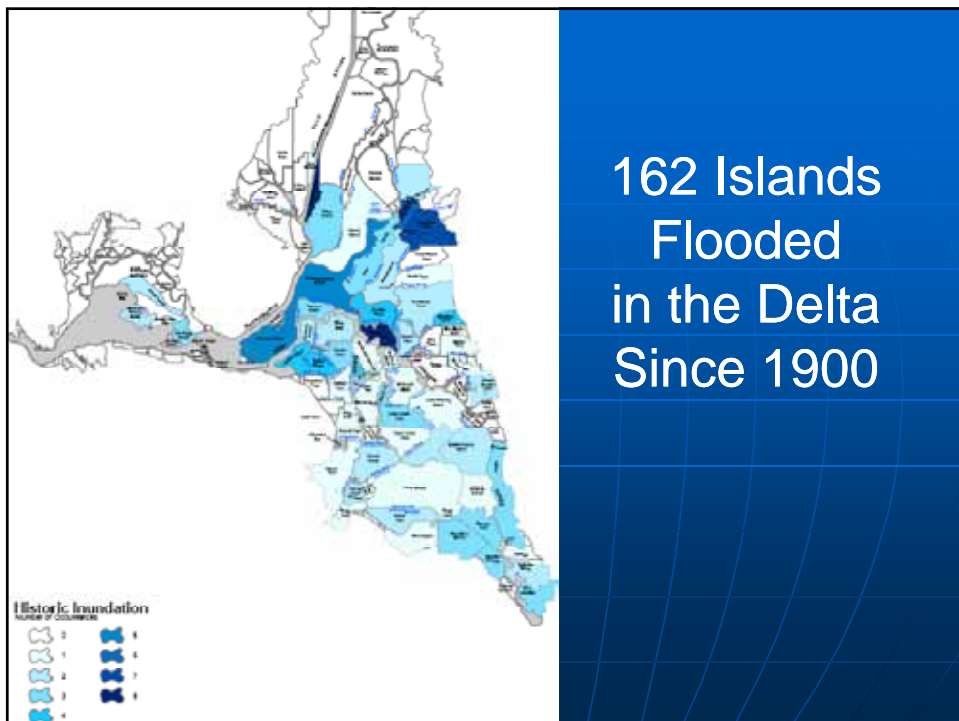




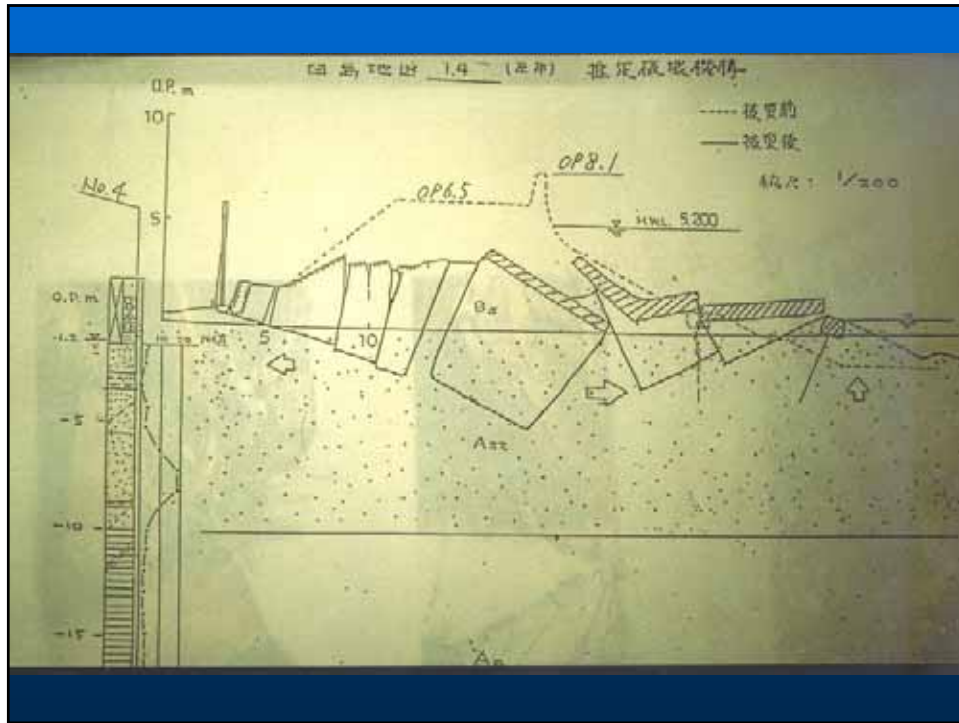
### California Moving Proactively:

- Calif. DWR & USACE
- \$6.5 billion State bonds
- Re-evaluate Urban and Non-Urban levees in the Central Valley
- 100-yr level of protection for Urban levees by 2012...
  
- and a plan for 200-yr by 2025
- Seismic policy and criteria to be developed (2012)

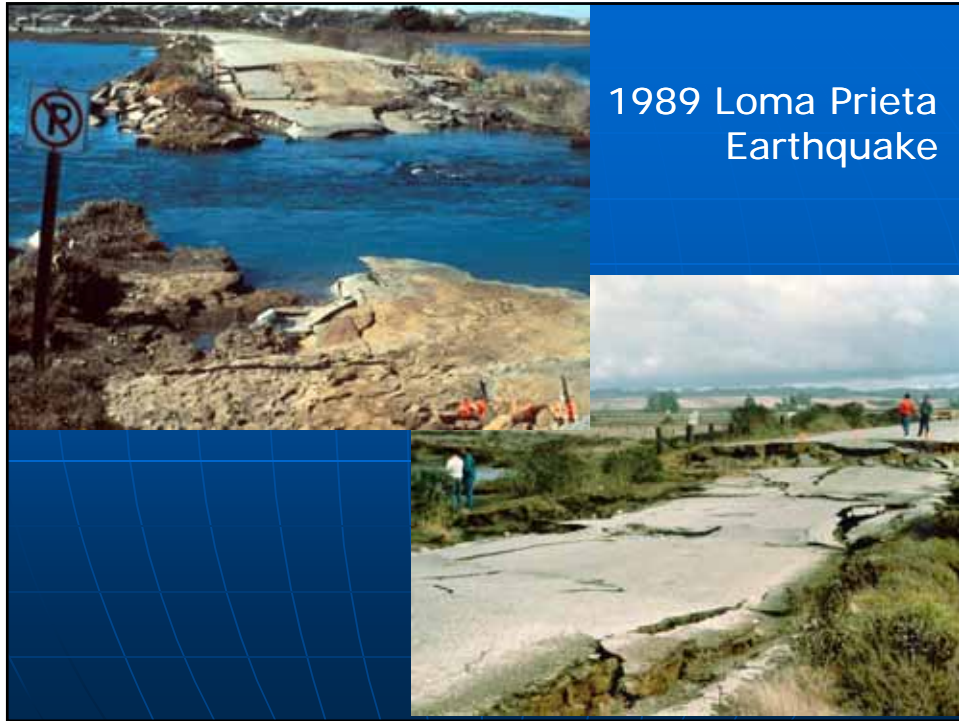


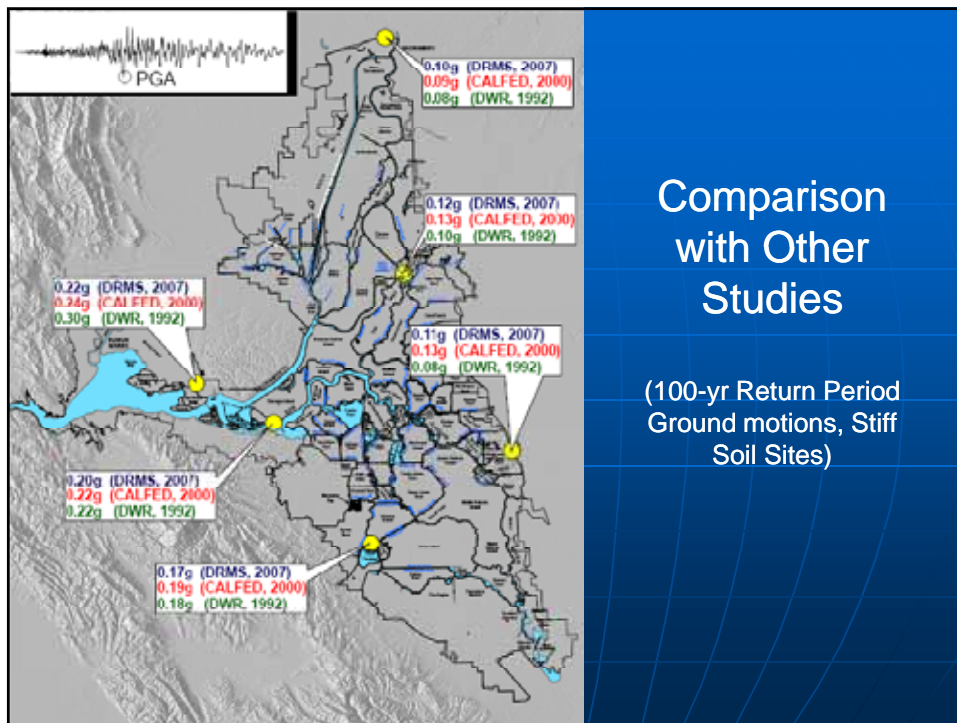


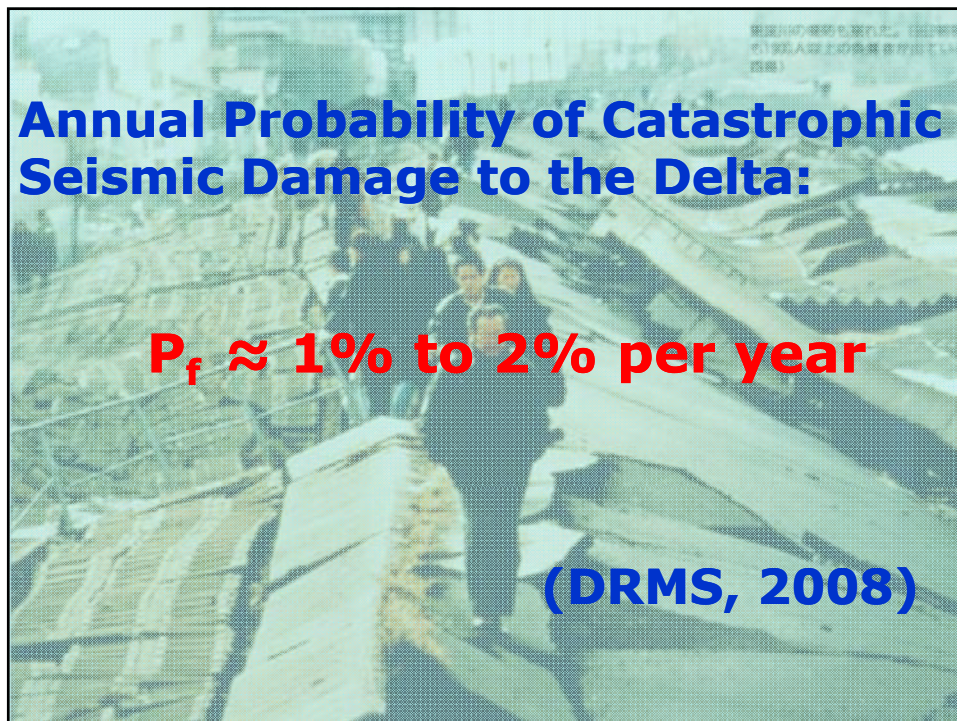
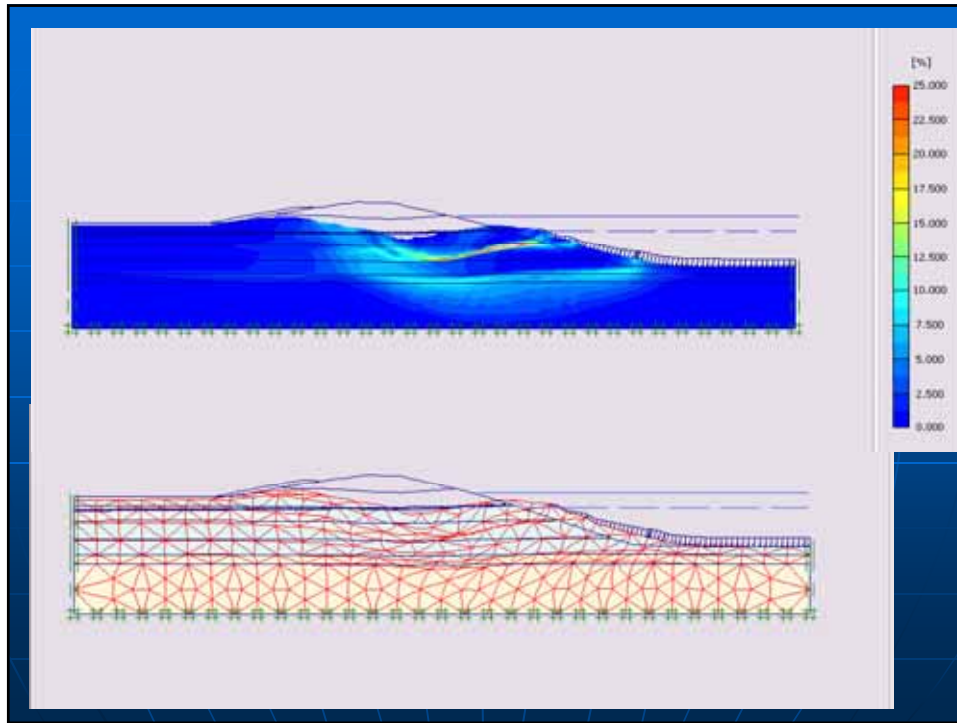


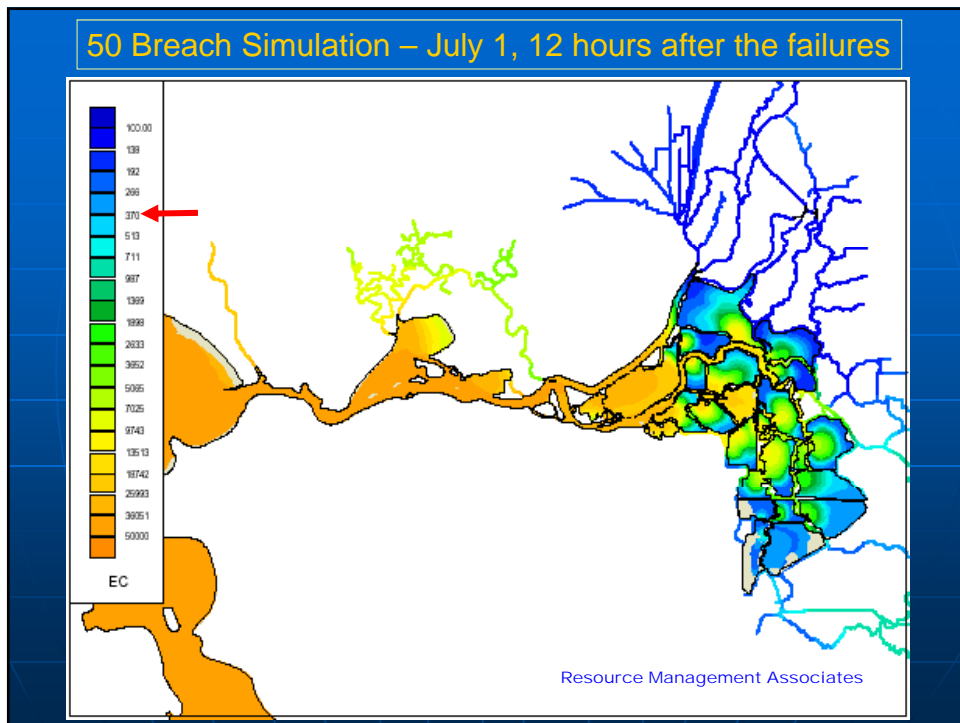
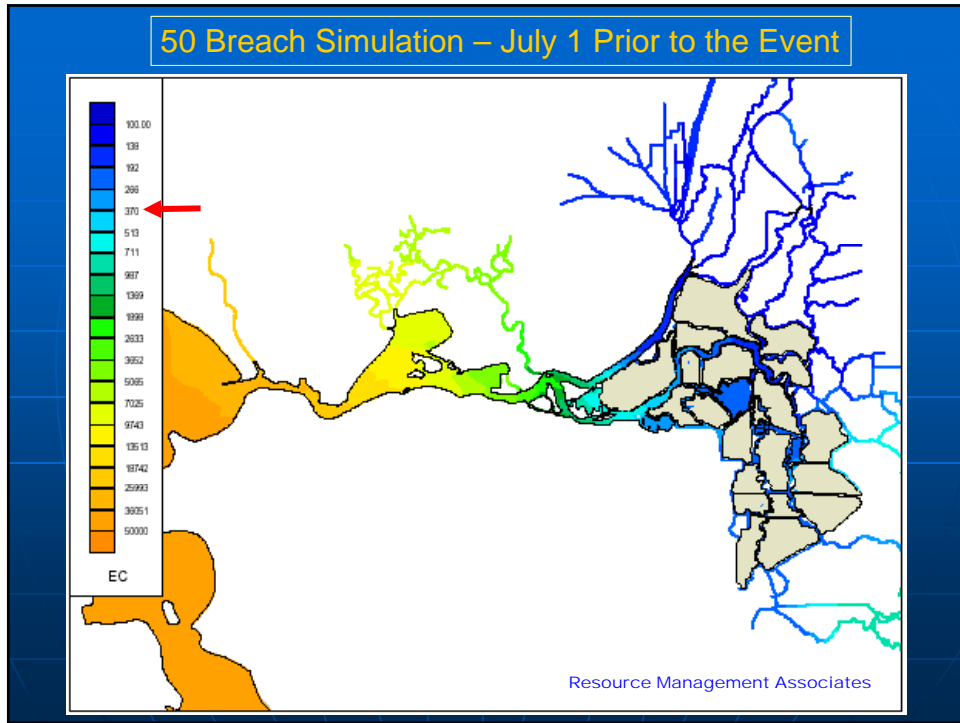


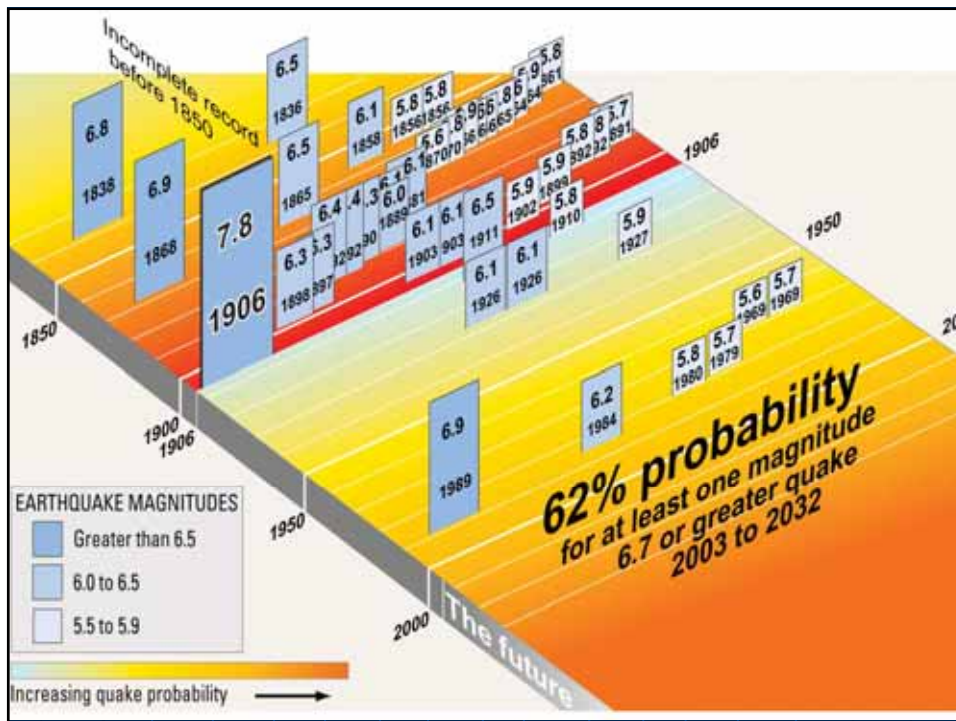
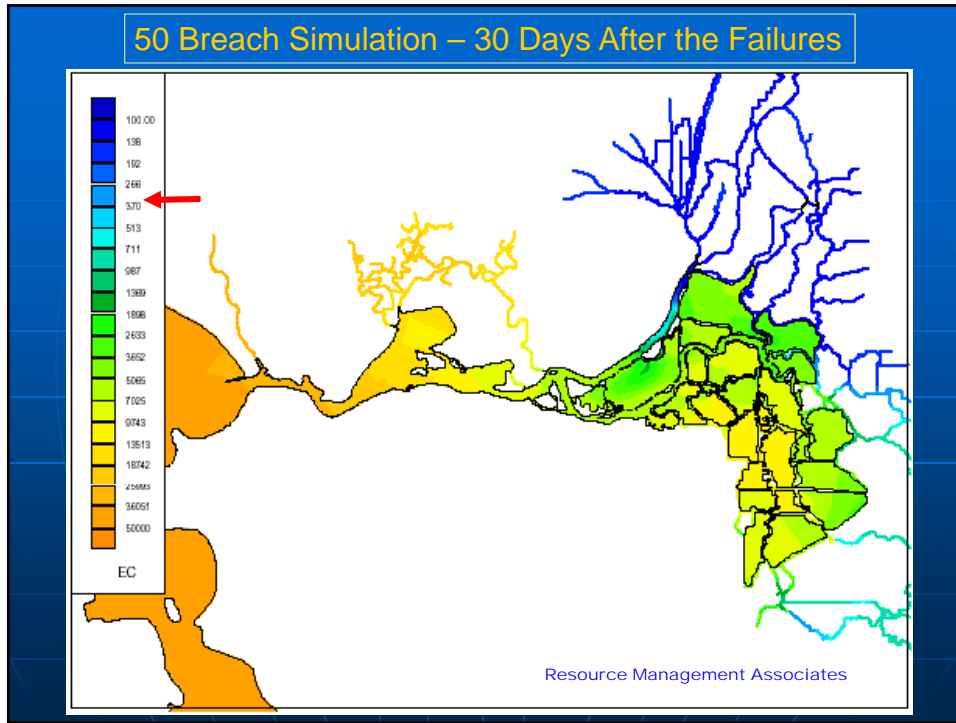


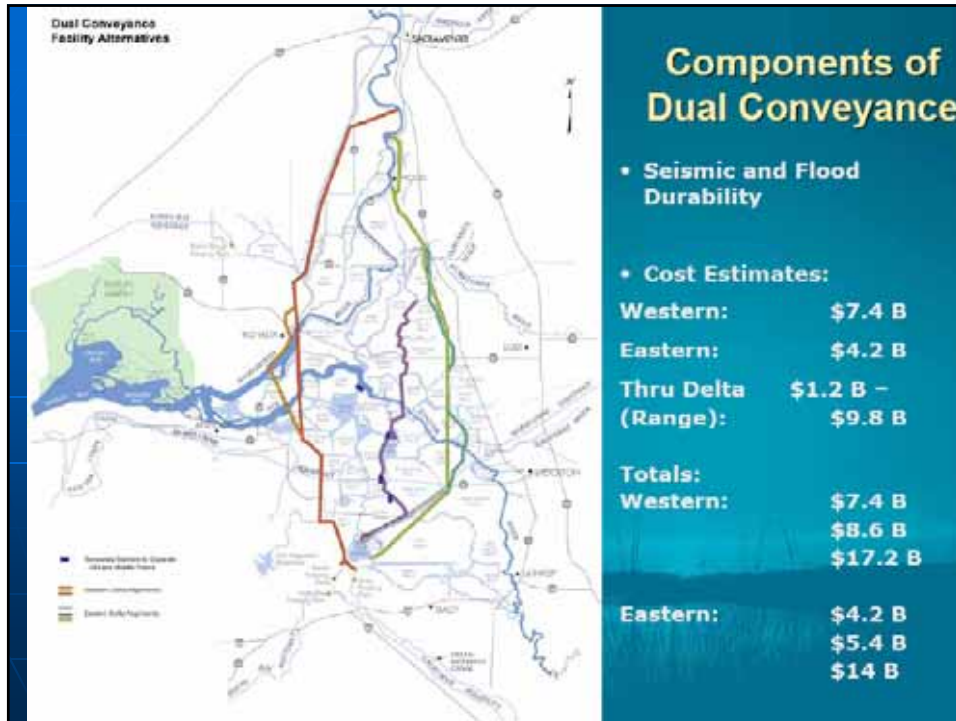












**Dual Conveyance Facility Alternatives**

**DELTA VISION PLAN**

**Co-Equal Values: Eco-System and Water Supply**

**Governance: Fair and Just**  
**Comprehensive in Outlook**  
**Adaptable over Time**  
**Responsible/Capable**

**Trust: Without establishing trust, the various disparate interest groups cannot make forward progress.....**

**Solutions must be Comprehensive:**  
**Eco-systems vs. Water Use**  
**Water Transmission/Storage/Conservation**  
**Local "In Delta" Interests and Values, etc.**

**Components of Dual Conveyance**

- Seismic and Flood Durability
- Cost Estimates:

Western:	\$7.4 B
Eastern:	\$4.2 B
Thru Delta (Range):	\$1.2 B - \$9.8 B
<b>Totals:</b>	
Western:	\$7.4 B
	\$8.6 B
	\$17.2 B
<b>Eastern:</b>	
	\$4.2 B
	\$5.4 B
	\$14 B