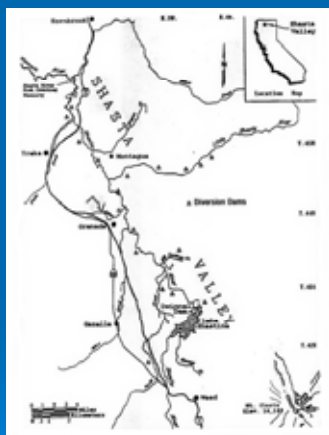


# Collaborative Water Resource Management on the Shasta River



**FORSCHREN**  
INCORPORATED  
engineers • surveyors • environmentalists

## Location



**FORSCHREN**  
INCORPORATED  
engineers • surveyors • environmentalists

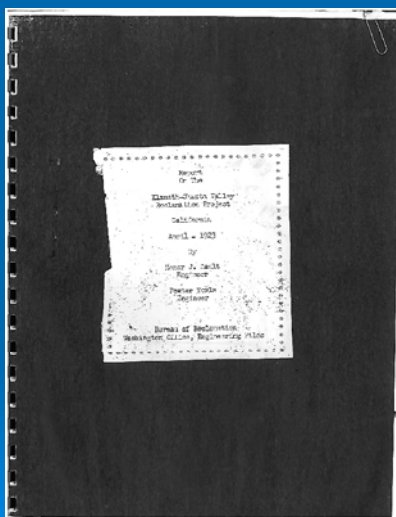
## The Community

- Local Ranchers / Residents
- Shasta Valley Resource Conservation District
- SOSS
- Agencies: CDFG, NRCS, WRCB, DWR, US FWS, Others



**FORSCHREN**  
INCORPORATED  
engineering survey construction

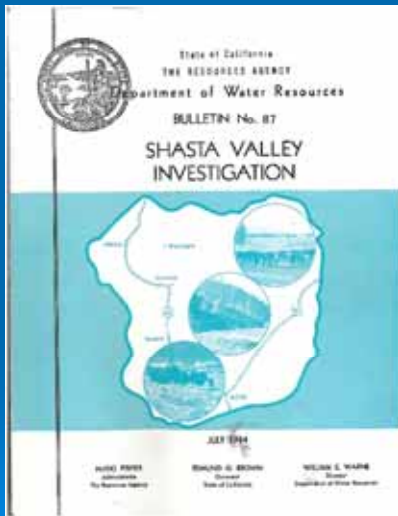
## Historical Efforts



- Klamath – Shasta Valley Reclamation Project
- April 1923
- Bureau of Reclamation

**FORSCHREN**  
INCORPORATED  
engineering survey construction

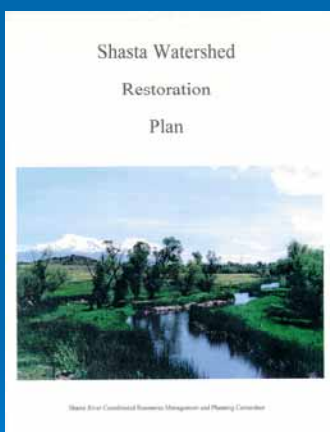
## Historical Efforts



- Shasta Valley Investigation
- July 1964
- Department of Water Resources

**FORSCHEN**  
INCORPORATED  
engineers • surveyors • environmental

## Historical Efforts



- Shasta Watershed Restoration Plan
- November 1997
- Shasta River Coordinated Resource Management and Planning Committee

**FORSCHEN**  
INCORPORATED  
engineers • surveyors • environmental

## More Recent Efforts



➤ Shasta River Preliminary Engineering Report

➤ December 2001

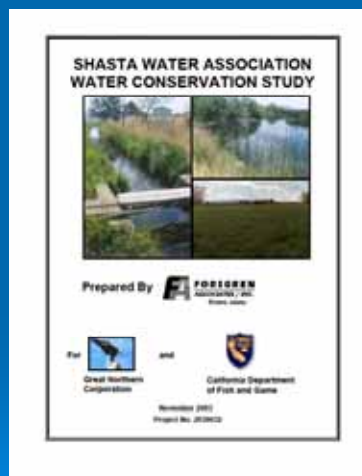
➤ Review Barriers on the Shasta and Little Shasta Rivers:

- Hole in the Ground
- Grenada
- Novy
- Shasta Water Association
- Araujo
- Little Shasta River Diversion

**FORSCHEN**  
INCORPORATED, INC.  
ENGINEERING • SURVEY • CONSULTING

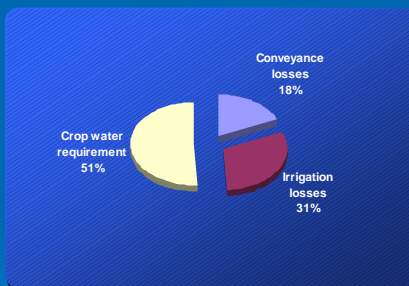
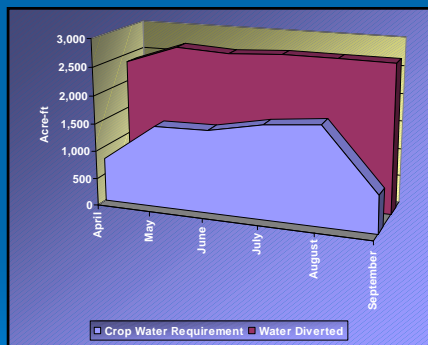
## SWA Water Conservation Study

- Field Flow Measurements
- Document Conveyance Losses
- Review Irrigation Practices
- Document Water Usage Efficiency
- Recommend Infrastructure Improvements
- Stakeholder Input



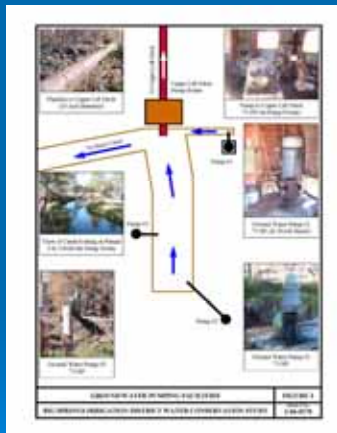
**FORSCHEN**  
INCORPORATED, INC.  
ENGINEERING • SURVEY • CONSULTING

# SWA Water Conservation Study



**FORSCHEN**  
INCORPORATED  
ENGINEERING • SURVEYING • CONSULTING

# Big Springs Water Conservation Study



**FORSCHEN**  
INCORPORATED  
ENGINEERING • SURVEYING • CONSULTING

## Consensus Efforts



**FORSCHEN**  
engineers • planners • architects

## Meetings Meetings Meetings



**FORSCHEN**  
engineers • planners • architects

## Design Work Begins 2005

➤ Collaboration between:

- Landowners
- SVRCD
- CDFG
- NRCS
- USFWS



**FORSCHREN**  
engineers • surveyors • environmentalists

## Design Work Begins

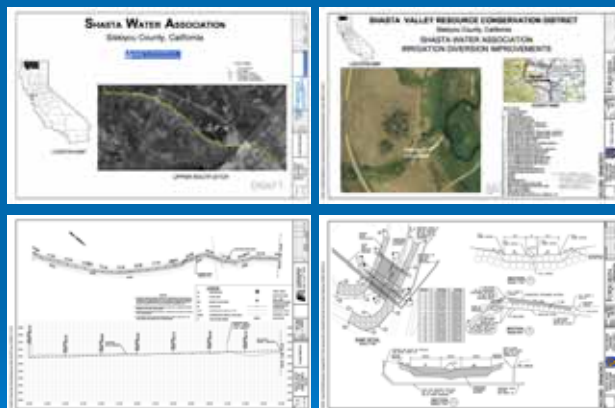
➤ Address:

- Fisheries
- Ranching
- Water Conservation
- Energy Efficiency
- Agriculture



**FORSCHREN**  
engineers • surveyors • environmentalists

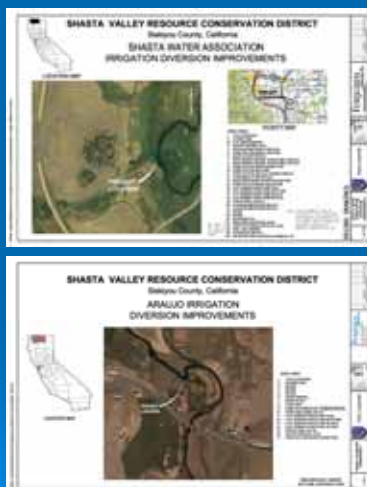
# Construction Plans



- Projects
- Upper South Ditch
  - Upper Middle Ditch
  - Lower Middle Ditch
  - Irrigation Diversion Improvements

**FORSCHEN**  
INCORPORATED, INC.  
 ENGINEERING SURVEYING ARCHITECTURE

# Additional Agency Funding 2007



- Projects
- Araujo Irrigation Diversion Improvements
    - Consolidate 4 diversions
    - Approx 12 cfs
    - Rock grade control structure
  - SWA Irrigation Diversion Improvements
    - Consolidate 4 diversions
    - Approx 43 cfs
    - Two rock grade control structures
    - Pipe or line 4.5 miles of unlined canal

**FORSCHEN**  
INCORPORATED, INC.  
 ENGINEERING SURVEYING ARCHITECTURE

## Araujo Diversion - 2001



**FORSCHEN**  
INCORPORATED  
ENGINEERING • SURVEYING • ENVIRONMENTAL

## Araujo Construction



**FORSCHEN**  
INCORPORATED  
ENGINEERING • SURVEYING • ENVIRONMENTAL

## Araujo Diversion - 2008



**FORSCHEN**  
INCORPORATED  
engineers • surveyors • environmental

## SWA Diversion - 2005



**FORSCHEN**  
INCORPORATED  
engineers • surveyors • environmental

# SWA Construction



**FORSCHEN**  
CORPORATION  
engineers • surveyors • environmental

# SWA Construction



**FORSCHEN**  
CORPORATION  
engineers • surveyors • environmental

## SWA 2009



## Key to the Process

- Multitude of Small Steps
- Grass Roots Level
- Each Step Building Block For The Next
- Steps Designed to Build Consensus and Address Stakeholder Concerns
- Comprehensive Solution



**FORSGREN**  
INCORPORATED, LLC  
 engineering. strategy. innovation.

## Conclusion

- Sustained Dedication to Collaboration Pays Off
- Supposedly Conflicting Interests Can Collaborate on Local Level in Cooperation with State and Federal Agencies to Implement a Truly Win Win Win Solution.

